



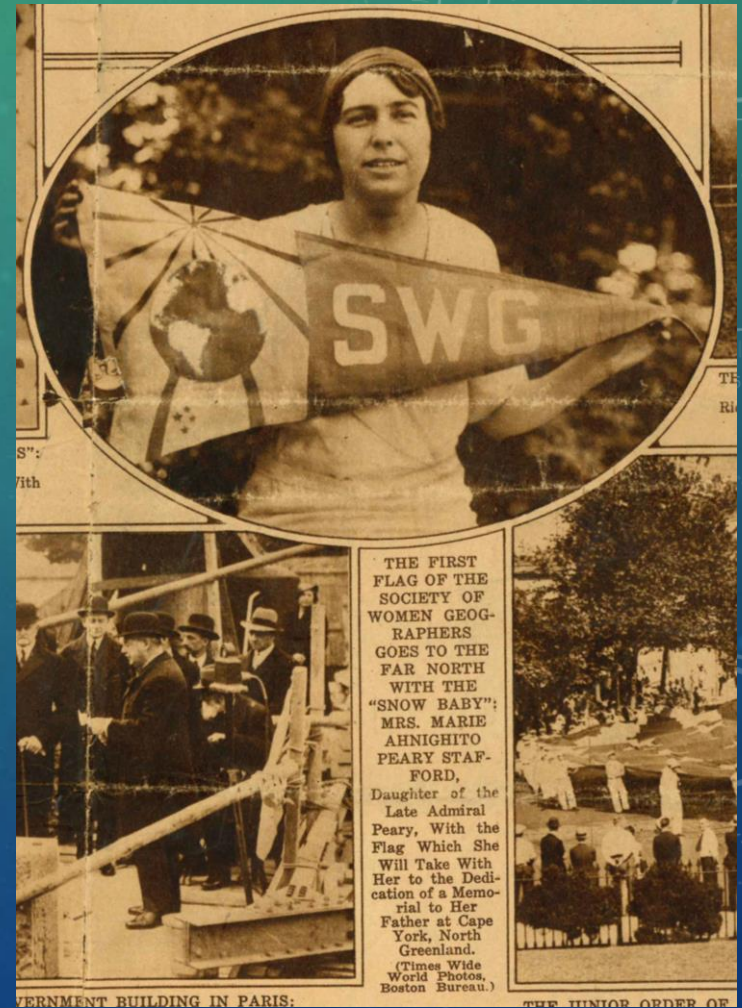
SWG'S FLAG CARRIERS

1932-PRESENT

Marie Peary Stafford

1932

Cape York, North Greenland, for
dedication of memorial to
Admiral Robert E. Peary.



Amelia Earhart

1932

Flight from New York to Washington to receive National Geographic Society medal for earlier transatlantic flight; believed to have carried flag on 1935 solo Hawaii-California flight, last flight in 1937, and perhaps others.



Associated Press Photo
WOMEN GEOGRAPHERS CELEBRATE.—Amelia Earhart Putnam, wearing her Pacific flight clothes was guest of honor at anniversary dinner of Society of Women Geographers in New York. All attending wore native costumes of countries in which they are interested.



Gloria Hollister

1934

Bermuda for first descent in
the bathysphere.



Margaret Mead

1936

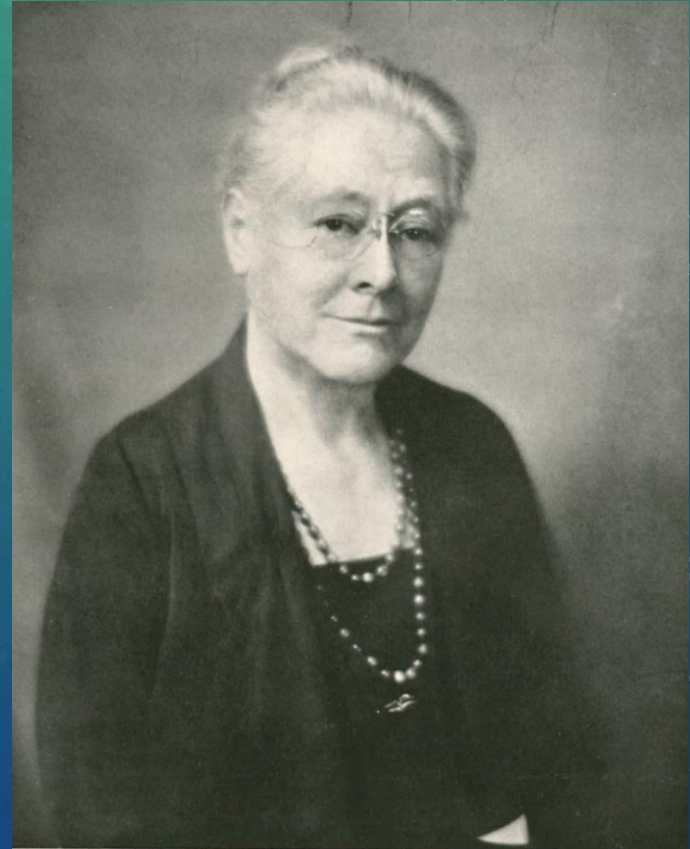
Bali and New Guinea for
research among indigenous
tribes.



Mary Vaux Walcott

1936

Japan for botanical research
and collection of wildflowers
for Smithsonian Institution.



Lucille Quarry Mann

1937 and 1940

'37: East Indies on National Geographic-Smithsonian Expedition to collect live animals, birds, and reptiles for the National Zoo.

'40: West Africa on Smithsonian-Firestone Expedition to collect live specimens for the National Zoo.



Marion Stirling

1948, 1951, 1953, and 1957

'48, '51, '53: Panama on
National Geographic-
Smithsonian Expeditions.

'57: Pacific coast of Ecuador on
National Geographic-
Smithsonian Expedition.



1953

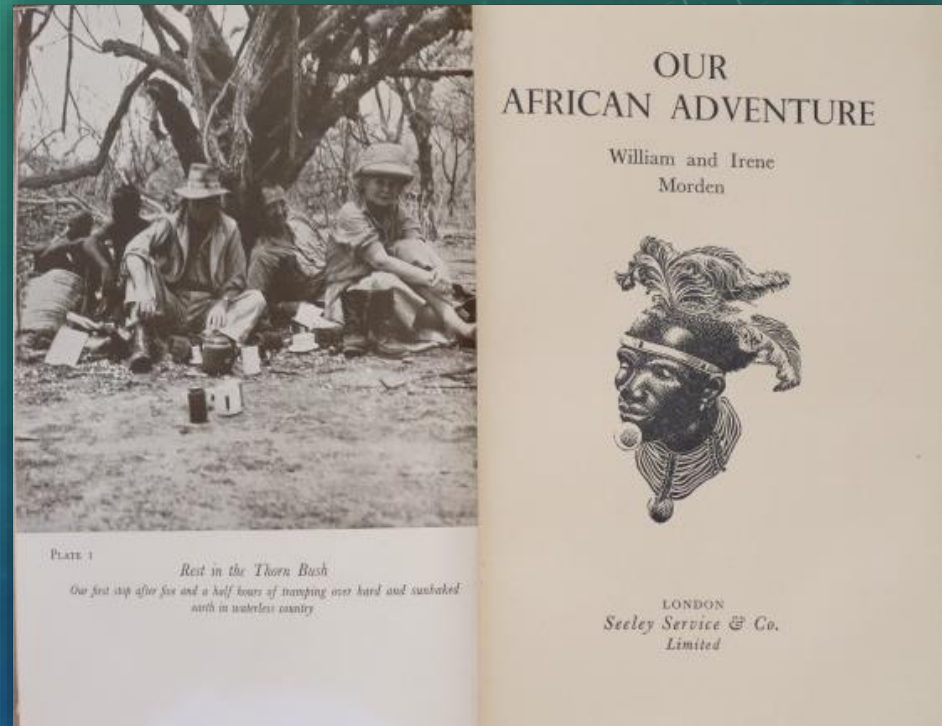


1957

Irene Morden

1953

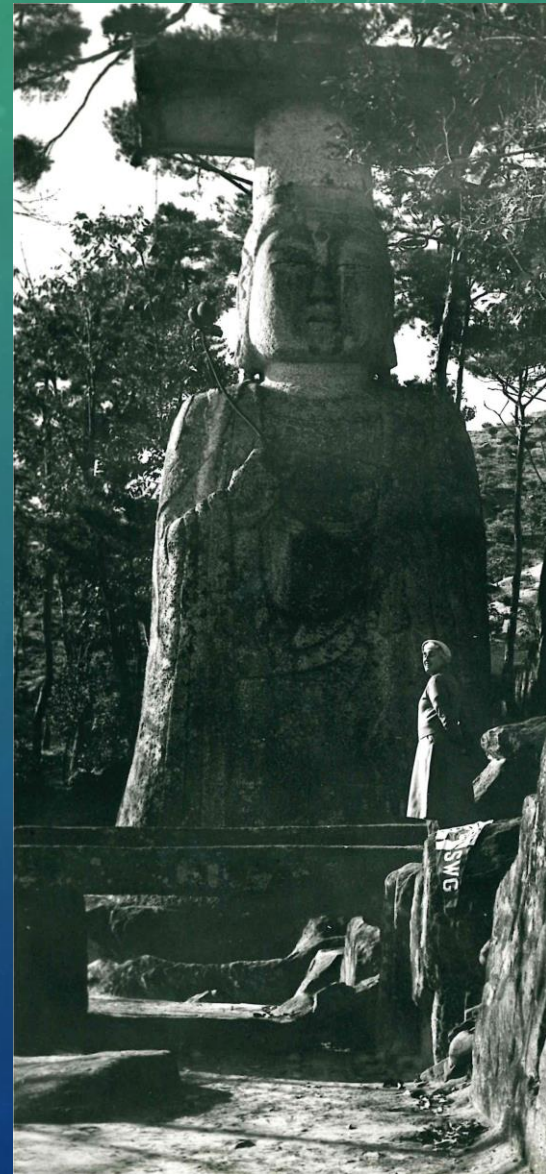
The Morden African Expedition to collect specimens for the American Museum of Natural History.



Ardelia Ripely Hall

1954

South Korea on a mission for the Departments of State and the Army to survey and photograph war damage to national monuments.



Margaretta Hopkins

1955 and 1956

Hunting expeditions to
Tanganyika and French
Equatorial Africa.



Dorothy Schweitzer

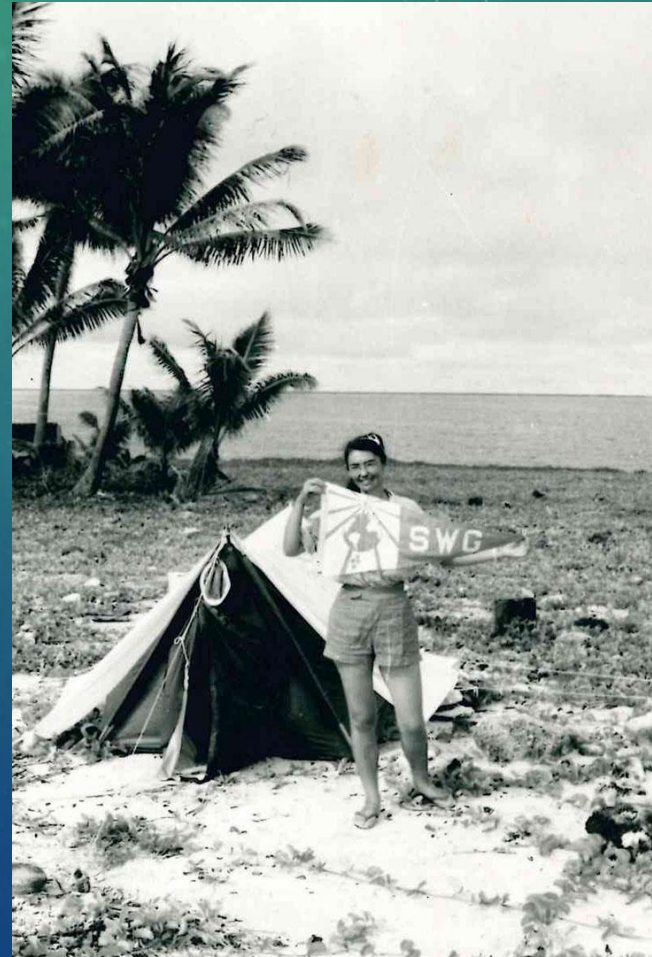
1957

The Society Islands to study coral reefs.



Marie-Hélène Sachet 1958

Clipperton Island, off the west coast of Central America, on Scripps Institution of Oceanography biological expedition.



Eugenie Clark

1962 and 1982

'62: Massawa, Eritrea, on Israel South Red Sea Expedition.

'82: Izu Oceanic Park, Japan, to study marine biota at various depths.



1982

Gladys Owen

1964

Oaxaca, Chiapas, and Yucatan, Mexico to study effects of transportation systems on native populations.



Gladys is on the left

Marie Poland Fish

1966

Canary Islands and coast of
West Africa on Narragansett
Marine Laboratory
oceanographic expedition.



Jeanne Gurnee

1968

Alta Verapaz area,
Guatemala, on speleological
expedition sponsored by
the Explorers Club.



Anne Lyon Haight

1968

Greenland, to collect
Eskimo artifacts for the
Stefansson Collection at
Dartmouth College.



Ellen Sparry Brush

1970 and 1984

'70: Coastal Guerrero, Mexico, on American Museum of Natural History expedition.

'84: Chile and Bolivia on Third High Andean Expedition for study of highest lake in the world and its environs.



1984

Edith M. Ronne

1971

The South Pole,
participating in the 60th
Anniversary Celebration
of Amundsen's reaching
the South Pole, in
recognition of her year in
the Antarctic with the
Ronne expedition in
1946-48.



Mary Livingston Ripley

1981-1982

Arunachal Pradesh, India,
on an environmental
survey of the Namdapha
Valley for the Smithsonian
Institution.



Alison S. Brooks

1983

The northwest Kalahari Desert to excavate and date a Middle Stone Age faunal site.



Sara Bisel

1983-1984

Herculaneum, Italy, for
anthropological study of
skeletal material dating to
the eruption of Mt.
Vesuvius.



Mercedes Foster

1984

Cerro de la Neblina at the southernmost tip of Venezuela to study evolutionary processes.



Kathryn D. Sullivan

1984

Space, including three hour extravehicular experiment on feasibility of satellite refueling.



Tanya Atwater

1985

Exploring rifts in the ocean bottom, 300 miles northwest of the Galapagos Islands and two miles down.



Sylvia Earle

1985

Collecting marine life from the deep scattering layer in the Coronado Canyon offshore from San Diego, diving solo in the Deep Rover to 3,000 feet.



Patricia Rich

1989

An underground excavation in Dinosaur Cove, Otway National Park, Victoria, Australia, where rocks and fossils, including those of polar dinosaurs, are being exposed for the first time in 105 million years.



Patricia is on the bottom right

Elizabeth McKnight

1992 and 1993

'92: leader of expedition with first two women to traverse the 950-mile Rio Roosevelt river discovered by Theodore Roosevelt in 1914.

'93: 3-month 3,000-mile expedition across Tanzania, Burundi, and Zambia retracing Dr. David Livingstone's last two expeditions.



1993

Pam Flowers

1993-1994 and 1997

'93-'94: 2,500-mile solo dog sled expedition across Arctic North America, retracing Knud Rasmussen's portion of the 1923-24 Fifth Thule Expedition.

'97: First documented solo winter round trip by surface to Magnetic North Pole from Resolute Bay in Canada, Northwest Territories.



1993-94



1997

Ann Hawthorne

2003

The Southern Ross Sea area of Antarctica to photograph geographical features for historical gazetteer.



Karen Huntt & Michelle Westmorland

2005

Papua New Guinea and the Solomon Islands, retracing 1920s travels of portrait painter and SWG member Caroline Mytinger and documenting cultural changes over ensuing 80 years.



Martha (Marty) Hayne Talbot

2007 and 2011

'07: Participant in an expedition to survey the unexplored upper Nam On catchment area in the Nakai Nam Theun National Protected Area, Laos.

'11: The Nam Theun Watershed Expedition to the remote upper Annamite Mountains of Laos.



2007

Deborah Atwood

2009

The top of Mount Kilimanjaro, as part of a team conducting high-altitude physiological research.



Carole Hickman

2013

The Tjörnes Seacliff Shellbeds of Northern Iceland to “return” important museum specimens to a field setting that has assumed new scientific importance.



Joyce M. Johnson

2014

The Tacloban, Philippines to document the changes made since Typhoon Haiyan hit land November 8, 2013.



Maria Pia Casarini

2016

On board the Norwegian *Lance* to the Barents Sea to research and determine forces governing the break-up of ice by waves.



Whitney Grespin

2017

Bala Hissar in Kabul, Afghanistan to conduct interviews and research on how the use of civilian contractors impacts the host nation recipient's view of USG credibility and commitment to alliances and partnerships.





Who will carry the flag next?